

# Masters of Metal

BY JESSICA MOORMAN

## Rack 'Em Up

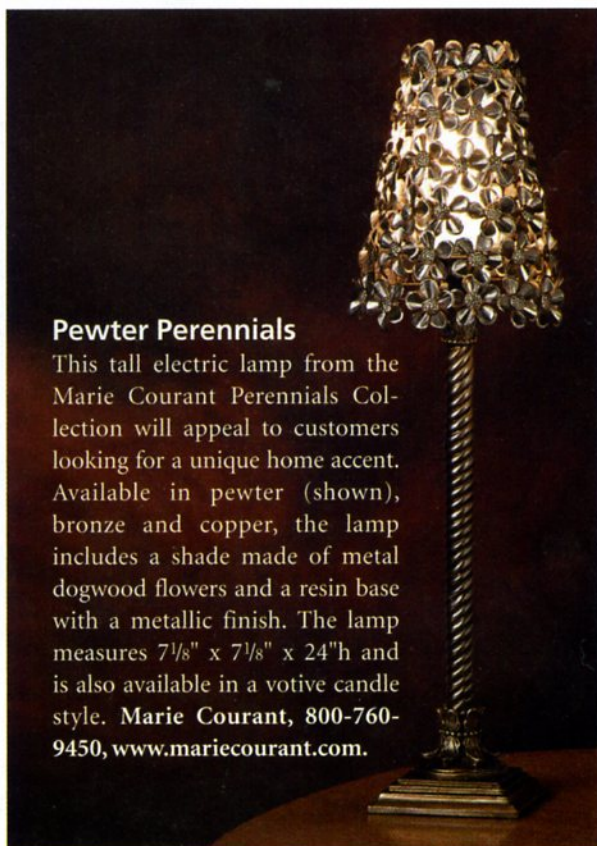
This nature-inspired Leaf Wine Rack from Village Wrought Iron is sure to be a hit with wine enthusiasts. Powder-coated with an attractive flat black finish, the wrought-iron three-bottle rack measures 9"l x 7"w x 9½"h. Leaf Wine Racks also available in larger versions to hold six or 10 bottles. **Village Wrought Iron, Inc.**, 800-683-5598, [www.villagewroughtiron.com](http://www.villagewroughtiron.com).



Modern flair meets classic style in today's metal-decor market. Take a look at some of the new products available in this genre.

## Pewter Perennials

This tall electric lamp from the Marie Courant Perennials Collection will appeal to customers looking for a unique home accent. Available in pewter (shown), bronze and copper, the lamp includes a shade made of metal dogwood flowers and a resin base with a metallic finish. The lamp measures 7½" x 7½" x 24"h and is also available in a votive candle style. **Marie Courant**, 800-760-9450, [www.mariecourant.com](http://www.mariecourant.com).



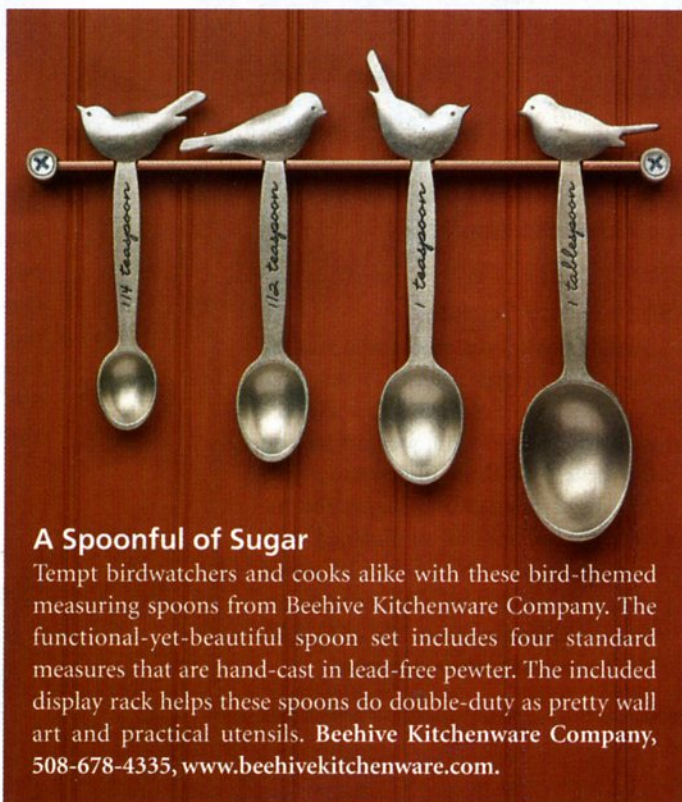
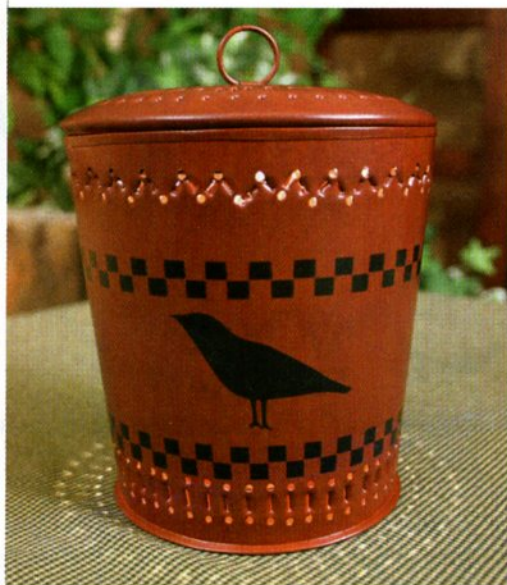


### A Happy Home

Offer customers a great decorating detail that will add a personal touch to any room with the Home pewter switchplate from Tin Woodsman Pewter Company. The design features a decorative key and the repeating sentence, "Home is where you are happy." Part of the 107 Switchplate Collection, the plates are available in 26 different configurations. **Tin Woodsman Pewter Company, 888-683-1196, [www.tinwoodsman.com](http://www.tinwoodsman.com).**

### Down on the Farm

Charm your customers with Colonial Tin Works' farm bucket wax warmers. Each warmer is screen-printed with adorable folk-art images of crows, stars, hens and more. A removable tray for wax potpourri is safely hidden under the punched-tin lid. The warmers measure 5" w at the top, 4 1/2" w at the base and 6" t. **Colonial Tin Works, Inc., 800-433-5054, [www.colonialtin.com](http://www.colonialtin.com).**



### A Spoonful of Sugar

Tempt birdwatchers and cooks alike with these bird-themed measuring spoons from Beehive Kitchenware Company. The functional-yet-beautiful spoon set includes four standard measures that are hand-cast in lead-free pewter. The included display rack helps these spoons do double-duty as pretty wall art and practical utensils. **Beehive Kitchenware Company, 508-678-4335, [www.beehivekitchenware.com](http://www.beehivekitchenware.com).**

### Scrap-Metal Pets

Your customers will fall in love with dog, cat and critter pot holders from Yardbirds. Made from recycled materials, each creation is slightly imperfect and naturally rusts with age. The 4" Terrier Pot Holder (13" l x 8" w x 12 1/2" h) has edger blades for fur, steel balls for toes and nose, and round rods for legs. **Yardbirds, 800-828-9247, [www.yardbirds.info](http://www.yardbirds.info).**





### Seaworthy Sconces

Appeal to coastal customers with seashell and sunfish sconces from Quintana Roo. The sconces are hand-cut with a jeweler's torch, which leaves a unique heat rose on each piece. The three-dimensional patterns are hammered into shape, and the pieces are left natural or finished with an antique acid wash and then lacquered (antique finish shown). Other shapes are available. **Quintana Roo, LLC, 512-847-3770, [www.quintanarooosa.com](http://www.quintanarooosa.com).**



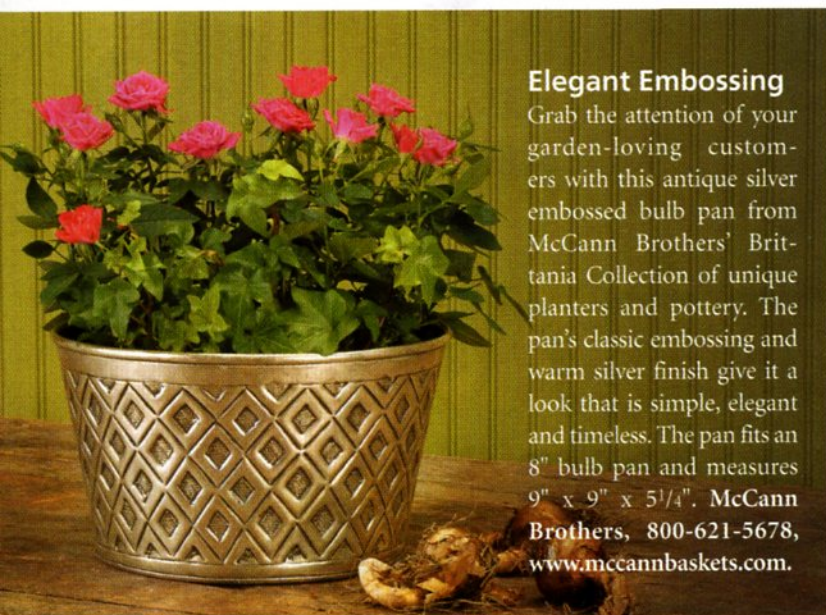
### French Flair

Inspired by the outdoor grillwork found in New Orleans's French Quarter, these hand-forged towel accessories from Park Designs feature a fanciful interpretation on the ever-popular fleur-de-lis. Made from natural iron, the single towel bar measures 24"w x 17½"h x 4¼"d. The New Orleans collection also includes other accessories. **Park Designs, 800-326-3382, [www.parkdesigns.net](http://www.parkdesigns.net).**



### Three's Company

Your customers can add a dramatic effect to any wall with the Triple Bell Glass Holder from J & J Wire. Measuring 25"w x 12"t, this decorative wrought-iron accent includes three bell glass votive holders. When the frosted-glass holders are filled with lit votive candles, the piece will give a pretty glow to any room. **J & J Wire, Inc., 800-633-0466, [www.jjwire.biz](http://www.jjwire.biz).**



### Elegant Embossing

Grab the attention of your garden-loving customers with this antique silver embossed bulb pan from McCann Brothers' Britania Collection of unique planters and pottery. The pan's classic embossing and warm silver finish give it a look that is simple, elegant and timeless. The pan fits an 8" bulb pan and measures 9" x 9" x 5¼". **McCann Brothers, 800-621-5678, [www.mccannbaskets.com](http://www.mccannbaskets.com).**

## Bronze on the Rise

While most gift and home-decor retailers don't sell appliances, there may be an appliance trend on the horizon that will have you re-evaluating your selection of metal products.

"Jenn-Air is just about to launch a revolutionary new finish in the kitchen, which is an oiled bronze," says James Martin, president of The Color People, a Denver, Colorado-based color design company and a member of the Color Marketing Group, an international group that forecasts and tracks color trends.

According to Martin, bronze may soon oust stainless steel as the must-have look in kitchen appliances because the warm tones in bronze finishes look good with nearly any decor. And, as many gift and home-decor retailers know, trends in larger home furnishings often influence trends in smaller home accents.

"You can already see it in door hardware, in lamps and lighting. It's starting to get in all the accessories," Martin says.

This may have your customers looking for more aged-bronze finishes in the items you carry, from metal furniture and picture frames to mixing bowls.

"What everybody is looking for right now is comfort," Martin says. "We all want our homes to feel like they offer us a little respite, so to have a doorknob or a door pull that is tactilely and visually gratifying and comfortable and feels like it's been there for awhile is very satisfying."

Martin also attributes the trend toward bronze to society's recent environmental concerns. "The environmental aspect is a huge trend in colors because people everywhere are vitally concerned about the environment," Martin says. "Polished chrome doesn't seem like nature, but oiled bronze does. They like colors that reflect the environment. They like colors that feel like they've been out in the environment. They like objects that feel like they will last or are sustainable. Then, they feel like they've done the right thing." ■

Sure to bring a smile to anyone's face!  
Handpainted rusted-look metal signs with whimsical sayings  
and coordinating "dangler." Hundreds of sayings.  
Ornaments, magnets and pins, too! Custom work available.

**Just Too Cute, Inc**

PO Box 818  
Cedar Crest, NM 87008  
505-281-3452 • Fax: 505-281-0079  
E-mail: [info@justtocuteinc.com](mailto:info@justtocuteinc.com)

**MONROE SALTWORKS**

76 Bartlett Hill Road  
Monroe, ME 04951  
888-525-4471

For more than three decades, each piece is handmade by skilled Maine artisans. Our stoneware designs are inspired by nature. Your customers will appreciate our beautiful Song Birds, handpainted Moose, colorful floral arrangements or another of our collectible patterns. Visit us online and enjoy the simple beauty of authentic salt glaze stoneware.

Web site: [www.monrosaltworks.com](http://www.monrosaltworks.com)